



FAUNIST

[Home](#)[Photos](#)[Identification](#)[Mobile](#)[Nederlands](#)

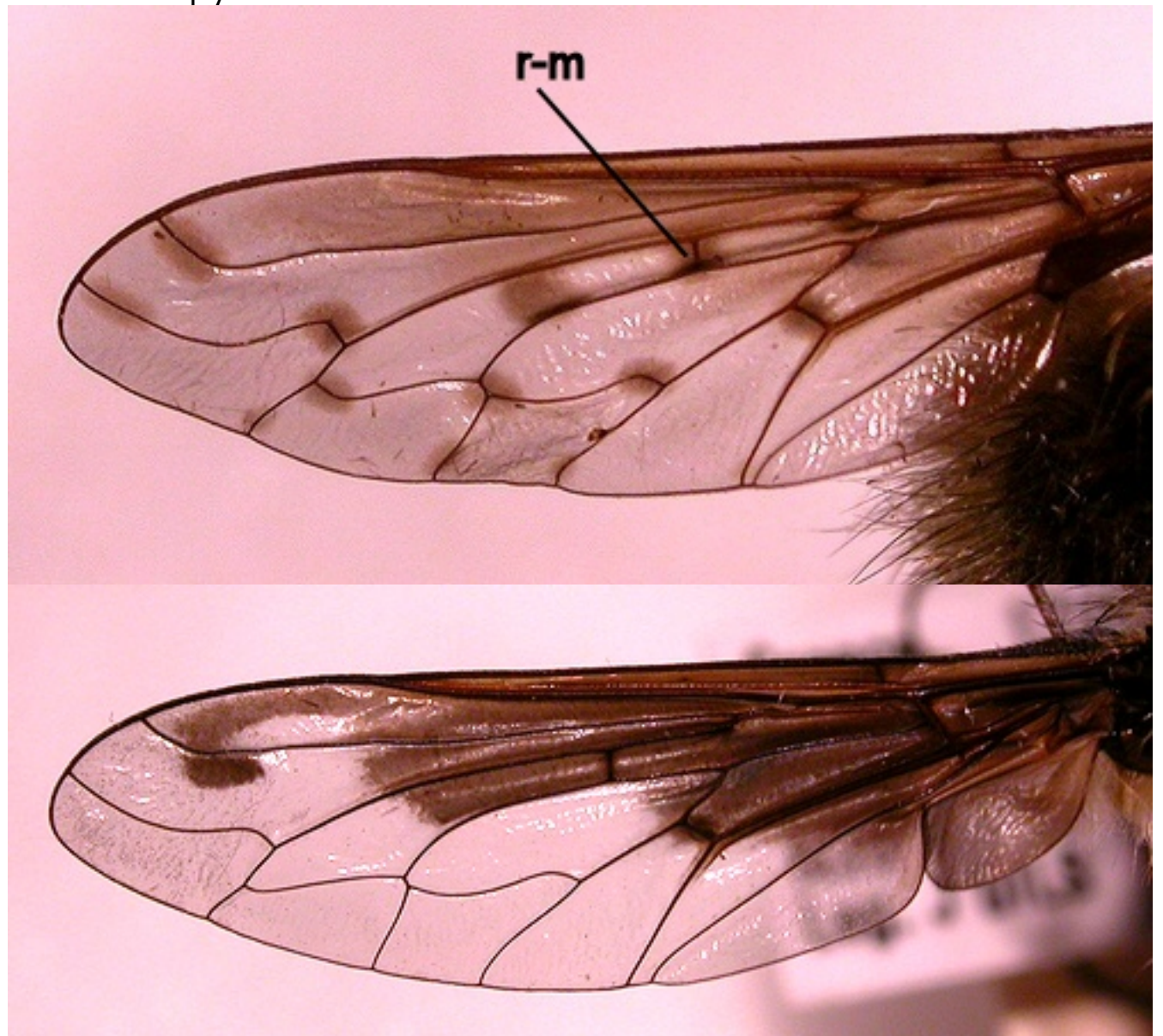
FAUNIST

[Home](#)[Photos](#)[Identification](#)[Mobile](#)[Nederlands](#)

BOMBYLIUS

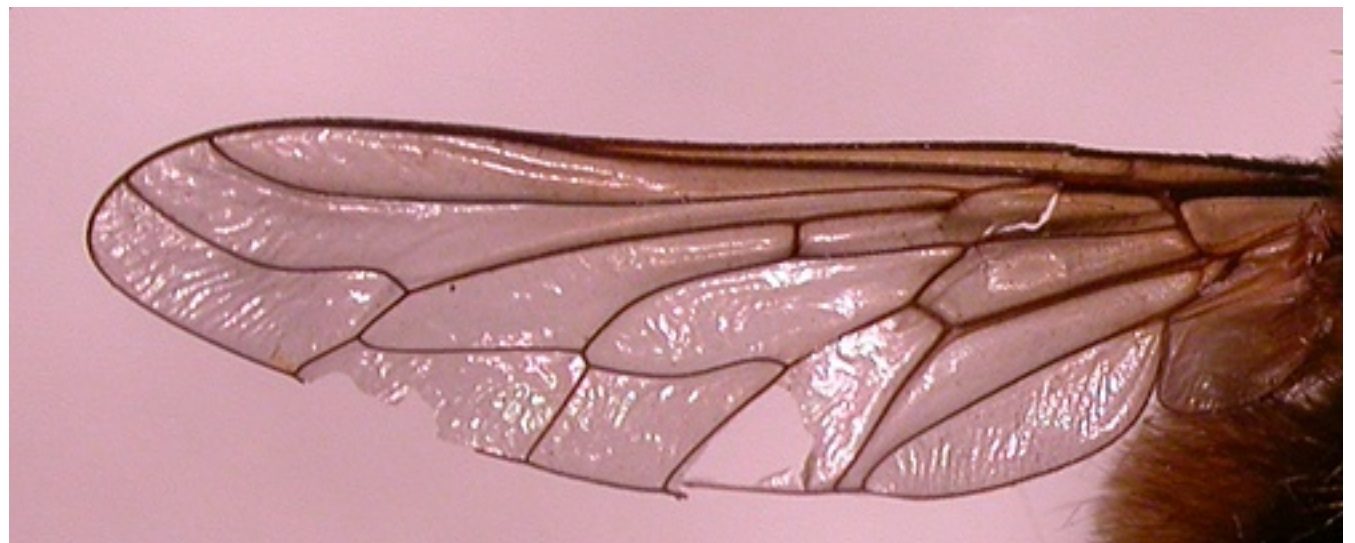
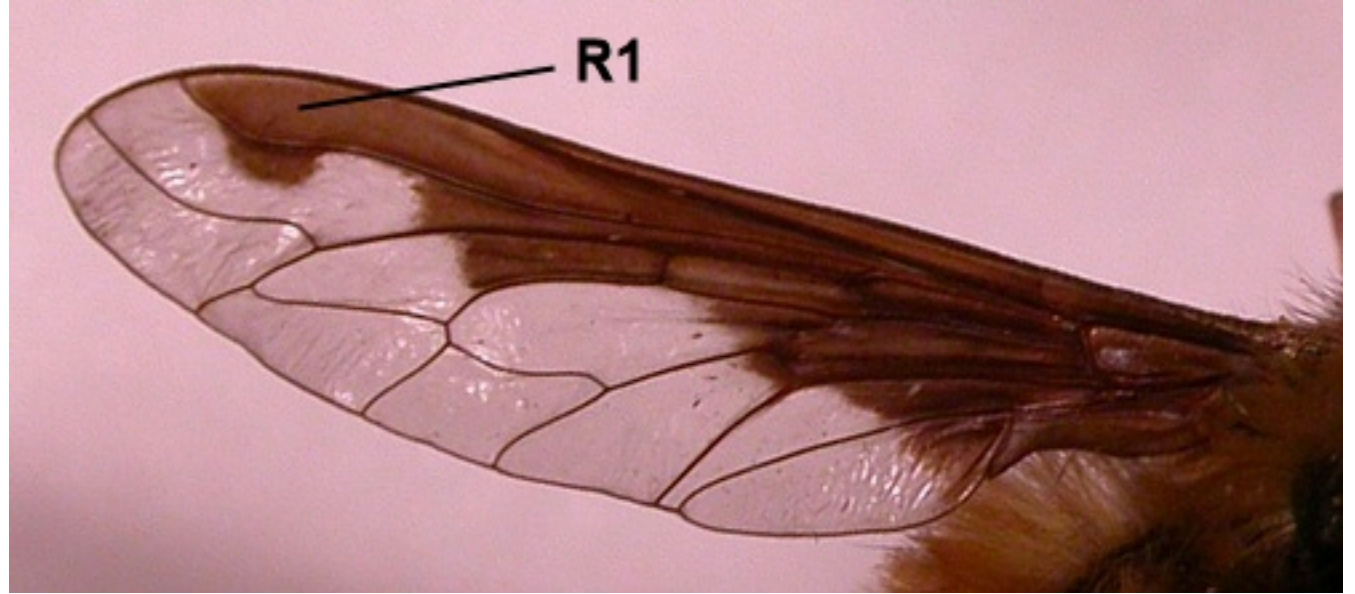
KEY

- 1.a Wing: with a number of dark patches all over the wing, front border darkened also -> 2
- 1.b Wing: without dark patches all over the wing, hyaline, with diffusely darkened front border or with a sharply defined dark front border -> 3



Wing with dark patches all over, above/left; wing without dark patches, but with dark front border, below/right.

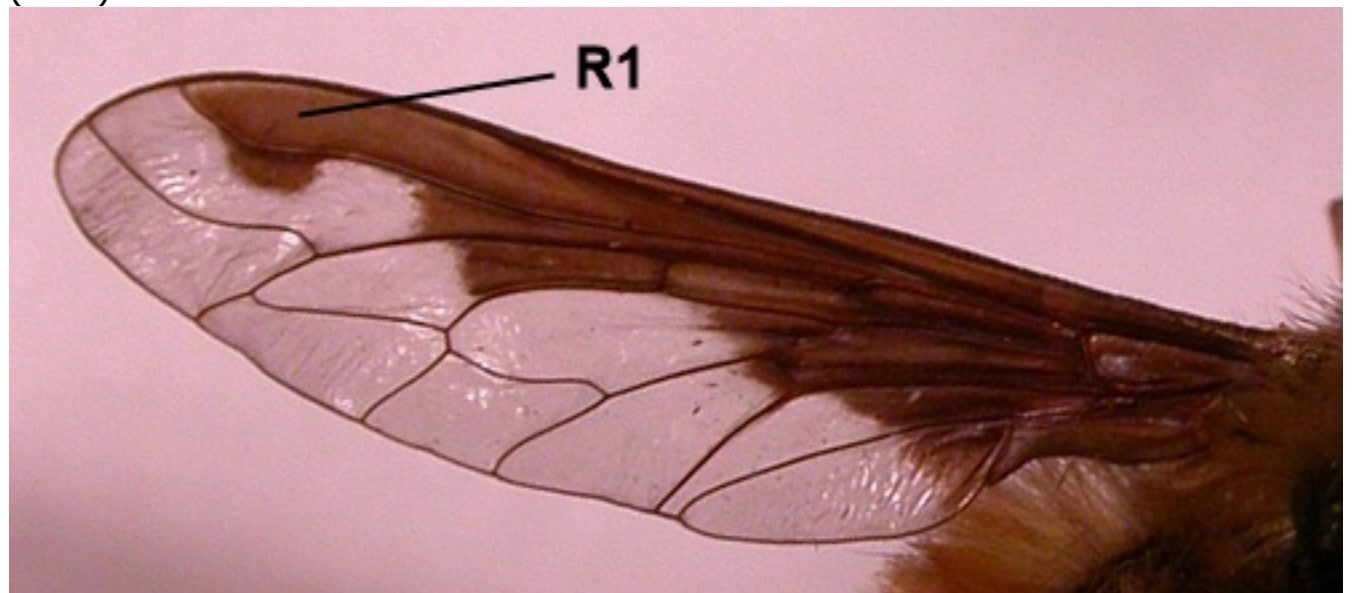
- 2.a Body ventrally black haired. 10-16mm. -> *Bombylius discolor* Mikan, 1796
- 2.b Body ventrally yellowish haired. 9-12.5mm. -> *Bombylius medius* Linnaeus, 1758
- 3.a Wing with a sharply defined dark front border -> 4
- 3.b Wing hyaline or with a diffusely marked front border -> 5



wing with sharply defined dark front border, left-above; wing with diffusely marked front border, right, below.

4.a Wing: the black patch fills the front cell R1 completely. 9-11.5mm. -> *Bombylius major* Linnaeus, 1758

4.b Wing: the black patch does not fill the front cell R1 completely, but leaves hyaline parts, sometimes isolating a black spot in the wing tip. 8-11mm. -> *Bombylius fimbriatus* Meigen (1820)





Wing *B. major*, left, above; wing *B. fimbriatus*, right, below.

- 5.a Body black haired; abdomen with silverish hair patches (take care with dead, disrupted material which may lose all of the hair patches). 6-11 mm. -> *Bombylius ater* Scopoli, 1763
- 5.b. Body yellowish haired; abdomen without silverish hair patches -> 6
- 6.a Head seen in front: along the hind border of the eye a row of black hairs on the head, contrasting with the yellow hairs -> 7
- 6.b Head seen in front: without black hairs along the hind border of the eye, only yellow hairs present -> 8
- 7.a Thoracic dorsum, just before the implant of each wing, with 2-3 black bristles (look at this part from behind, from an acute angle to the body), these bristles remain in animals that loose their body hairs. Head of the halter dark. 8-11mm. -> *Bombylius venosus* Mikan 1796
- 7.b Thoracic dorsum, just before the implant of each wing, with 2-3 yellow bristles (may be hard to see amongst the yellow hairs); head of the halter whitish. 7.5-11mm. -> *Bombylius canescens* Mikan, 1796
- 8.a Thoracic dorsum, just before the implant of each wing, with 2-3 black bristles among the yellow hairs. Haed of the halter dark. 7.5-10 mm. -> *Bombylius cinerascens* Mikan 1796
- 8.b Thoracic dorsum, just before teh implant of each wing, with 2-3 yellow bristles, which may be hard to detect amongst the yellow hairs. Head of the halter pale -> 9



B. cinerascens, black bristles just before implant of wing.

9.a Femora black beneath the silverish scales. 7-12mm. -> *Bombylius vulpinus* Wiedemann, 1820

9.b Femora yellowish to reddish beneath the silverish scales. 7-11 mm. -> *Bombylius minor* Linnaeus, 1758

BOMBYLIUS ATER



In Northwest Europe a very distinctive species, being the only one with black hair, silver scales and a long tongue. I found this species at the foot of warm chalk hills in southern Belgium and northern France. The photo is from the last location, where the flies visited *Leucanthemum*. In Belgium, I discovered a small specimen in a patch of flowering *Veronica chamadrys*

BOMBYLIUS CANESCENS



BOMBYLIUS CINERASCENS





BOMBYLIUS DISCOLOR



BOMBYLIUS FIMBRIATUS



BOMBYLIUS MAJOR



In the Netherlands, this is a relatively common spring species on sandy soils. It also lives in urban regions.

BOMBYLIUS MEDIUS



In the Netherlands, this species is only known from a few species taken at chalk hills in the extreme southeast.

BOMBYLIUS MINOR



BOMBYLIUS POSTICUS (=VULPINUS)



BOMBYLIUS VENOSUS



In the Netherlands, a relatively common species in the southeast. Its distribution follows the main rivers further north and west.

Last updated 22.1.2008